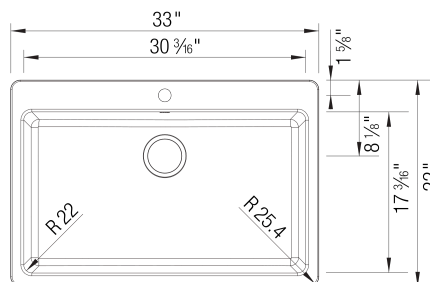




Sink Specifications

Colour	SKU
Cinder	403599
Volcano Gray	403632
Soft White	403633
Anthracite	403598
Café	403631
White	403628
Coal Black	403597
Truffle	403630

LIVEN 33 Super Single SILGRANIT



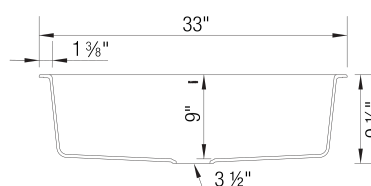
Design and planning tips

- Min cabinet size: 36 in (914 mm)
- Rim thickness: 1/4 in (7 mm)

Specifications:

3 1/2" stainless steel strainer(s), Installation instructions, Cut-out template, Drop-in clips, Limited Lifetime Warranty

4 additional knock-out holes for accessories
Undermount or drop-in installation

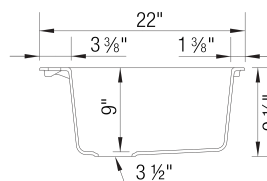


Codes & Standards

CSA B45.8-18/ IAPMO Z403-2018

Optional Accessories

Sink Grid 235914



Warranty

Limited lifetime warranty on all sinks and faucets. One-year warranty on all accessories and soap dispensers.

Code/Standards Compliance

BLANCO sinks and faucets are third-party tested and certified to CSA, cUPC, ANSI/ASME, IAPMO and NSF standards and listed by applicable certification bodies. For more information on individual product listings, contact our office or listing organization.



Need support? Learn more by watching our sink & faucet How-to videos:

<https://www.blanco.com/ca-en/support/how-to-videos/how-to-videos-for-sinks/>



BLANCO Canada Inc
100 Corporation Drive
Brampton ON L6S 6B5

Tel & Fax

Tel: 905-494-2400 Toll free: 1-877-425-2626

Fax: 905-494-2425 Toll free: 1-877-825-2626

While BLANCO strives to provide accurate information, all images and dimensions in this document are intended for reference only and are subject to change at any time without notice. This document is not intended for use as an installation guide. For technical installation details, refer to installation instructions provided with the product. BLANCO assumes no responsibility for the use of superseded or voided specifications.