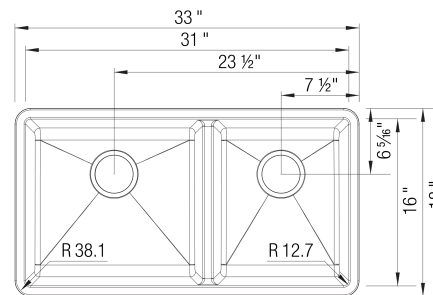




## Sink Specifications

Colour	SKU
Anthracite	400583
Café	400585
Truffle	401142
Cinder	401396
White	401706
Coal Black	402652
Soft White	402876
Volcano Gray	402921

## PRECIS U 1<sup>3</sup>/<sub>4</sub> SILGRANIT

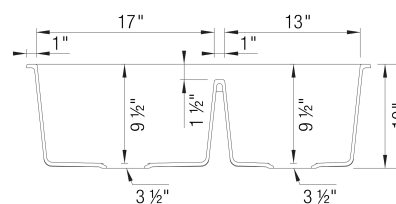


### Design and planning tips

- Min cabinet size: 36 in ( 915 mm )

#### Specifications:

3 1/2" stainless steel strainer(s), Installation instructions, Cut-out template, Limited Lifetime Warranty

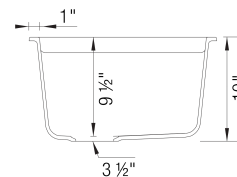


### Codes & Standards

CSA B45.8-18/ IAPMO Z403-2018

### Optional Accessories

Sink Grid	516364
CapFlow Strainer Cover	517666
Floating Grid	233542
Sink Grid	516366
BOTTOM II	526376



### Warranty

Limited lifetime warranty on all sinks and faucets. One-year warranty on all accessories and soap dispensers.

### Code/Standards Compliance

BLANCO sinks and faucets are third-party tested and certified to CSA, cUPC, ANSI/ASME, IAPMO and NSF standards and listed by applicable certification bodies. For more information on individual product listings, contact our office or listing organization.



Need support? Learn more by watching our sink & faucet How-to videos:

<https://www.blanco.com/ca-en/support/how-to-videos/how-to-videos-for-sinks/>



BLANCO Canada Inc  
100 Corporation Drive  
Brampton ON L6S 6B5

#### Tel & Fax

Tel: 905-494-2400 Toll free: 1-877-425-2626

Fax: 905-494-2425 Toll free: 1-877-825-2626

While BLANCO strives to provide accurate information, all images and dimensions in this document are intended for reference only and are subject to change at any time without notice. This document is not intended for use as an installation guide. For technical installation details, refer to installation instructions provided with the product. BLANCO assumes no responsibility for the use of superseded or voided specifications.