

## Product information sheet CATRIS-S Flexo

Item no. 525791

### Benefits

---



- Contemporary semi-professional mixer tap with a distinguished design
- Flexible, moveable spray hose for extra reach around the sink
- Jet spray option for cleaning fruit and vegetables and clearing tough food debris
- Precise magnetic holder ensures convenient hose docking
- Spout swivels 360° to provide a large working radius, great for positioning on kitchen islands

## Colours

---



galvanic chrome

Available colours:  
chrome

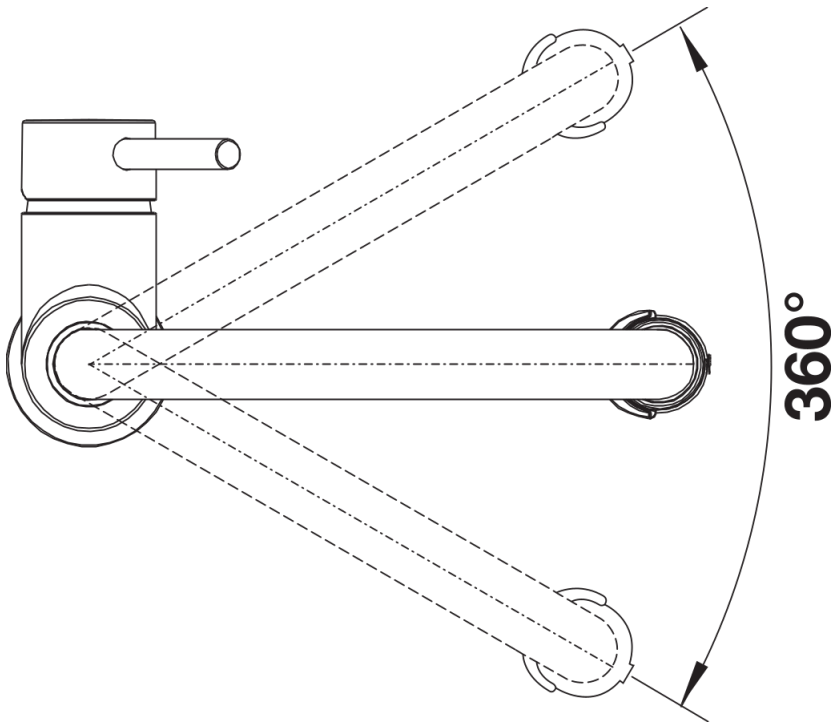
## Scope of supply

---

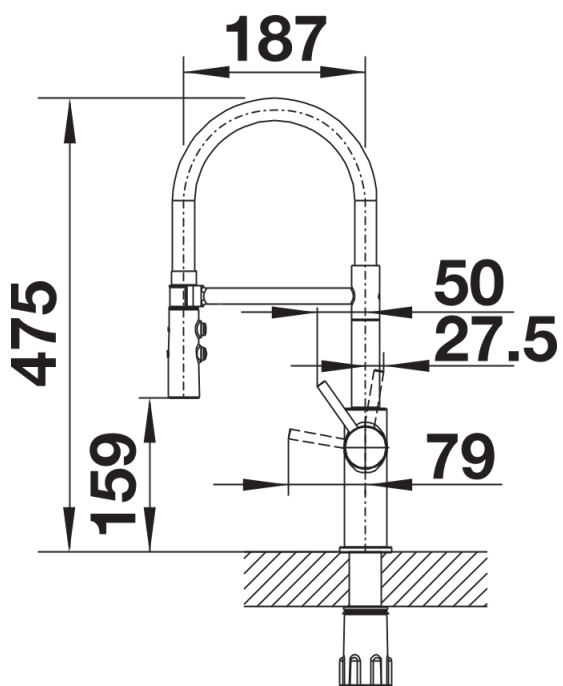
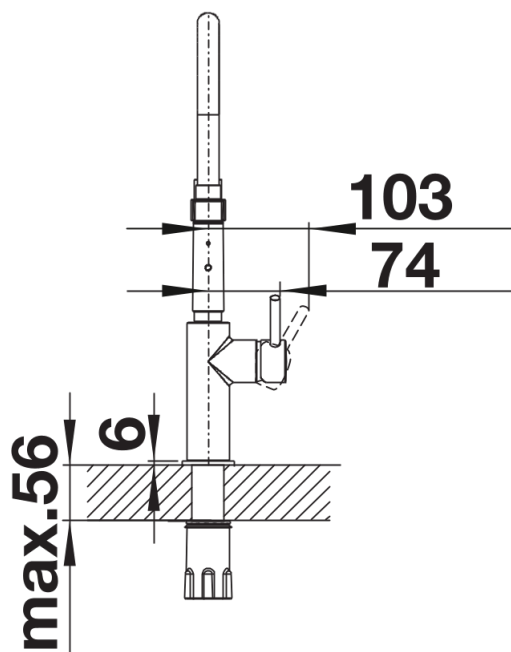
- Ø 35 mm tap hole required
- Flexible connector pipes, 700 mm long and  $\frac{3}{8}$ " nut
- Requires balanced high pressure supply only, minimum 1.0 bar
- Fit metal stabilising bracket if required, item number 513383

## Details

---



Swivel range



Side view