

Product information sheet CATRIS-S Flexo

Item no. 527731

Benefits



- Classic lines flow into semi-professional design and features
- Flexible black hose provides optimal range of motion
- Dual spray with integrated flow stop: easy switch from aerated stream to powerful rinse spray
- Precise magnetic holder ensures convenient hose docking

Colours



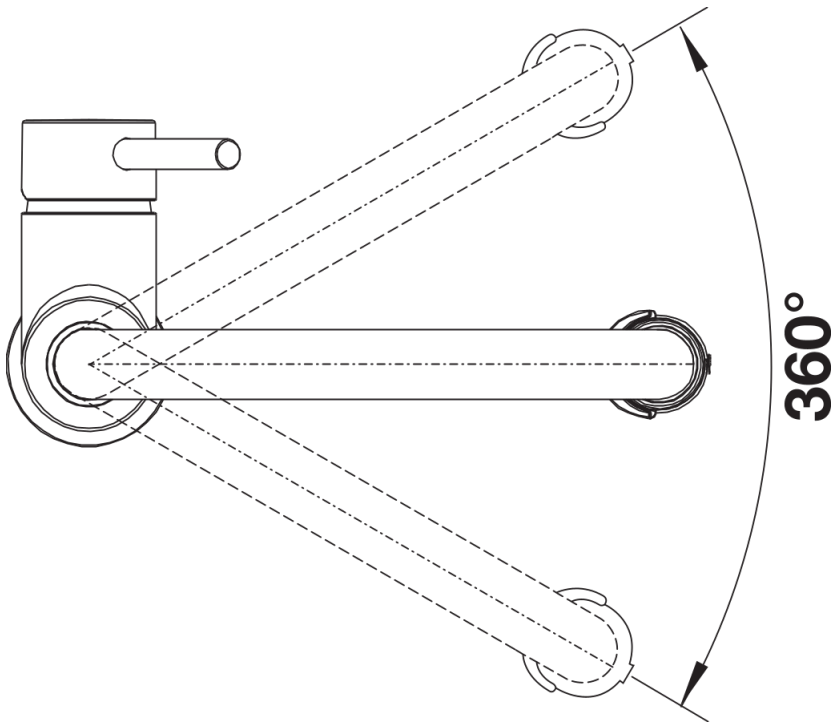
Available colours:
satin dark steel

PVD satin dark steel

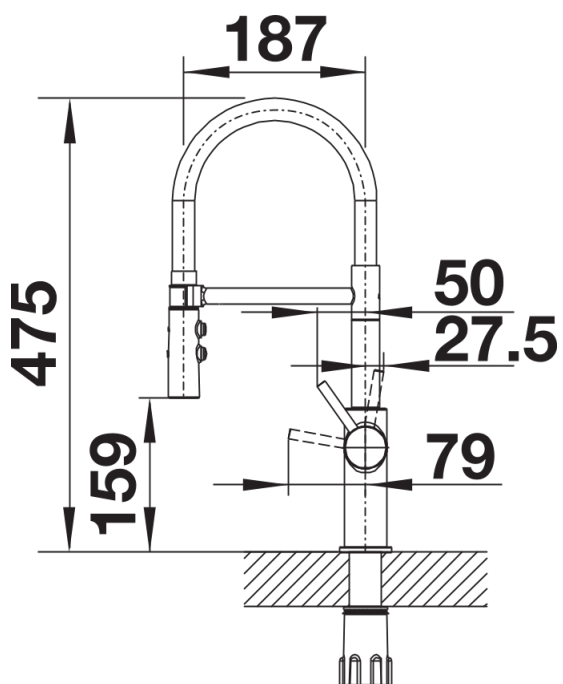
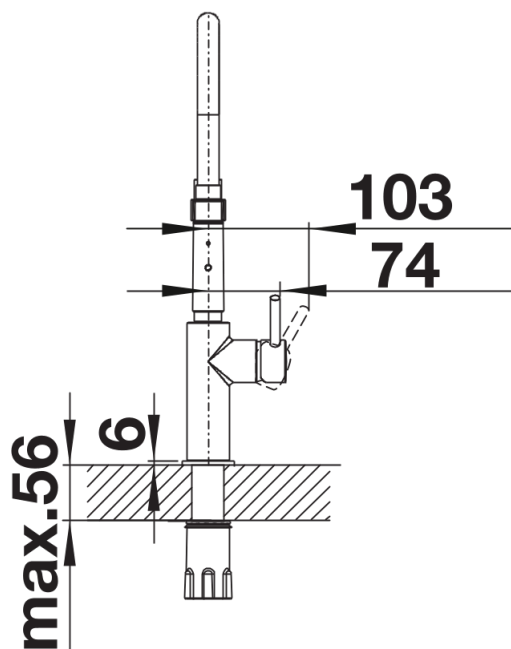
Scope of supply

- Ø 35 mm tap hole required
- Flexible connector pipes, 700 mm long and $\frac{3}{8}$ " nut
- Requires balanced high pressure supply only, minimum 1.0 bar
- Fit metal stabilising bracket if required, item number 513383

Details



Swivel range



Side view