

## Product information sheet TRIMA Filter

Item no. 520840

### Benefits

---



- Comfortable 3 in 1 mixer tap with cold and warm water lever on the right, filtered water lever on the left
- Ergonomically shaped control elements with clear identification of functions
- Separate water circuit with extra spout for filtered water
- 360° swivel spout for greater reach
- Needs to be installed with a water filter system

### Colours

---



Available colours:

chrome

galvanic chrome

## Scope of supply

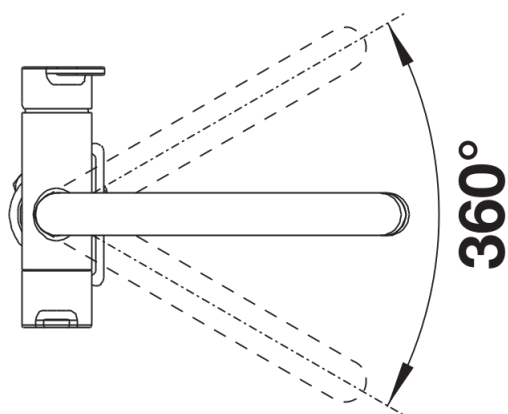
---

### Mixer tap:

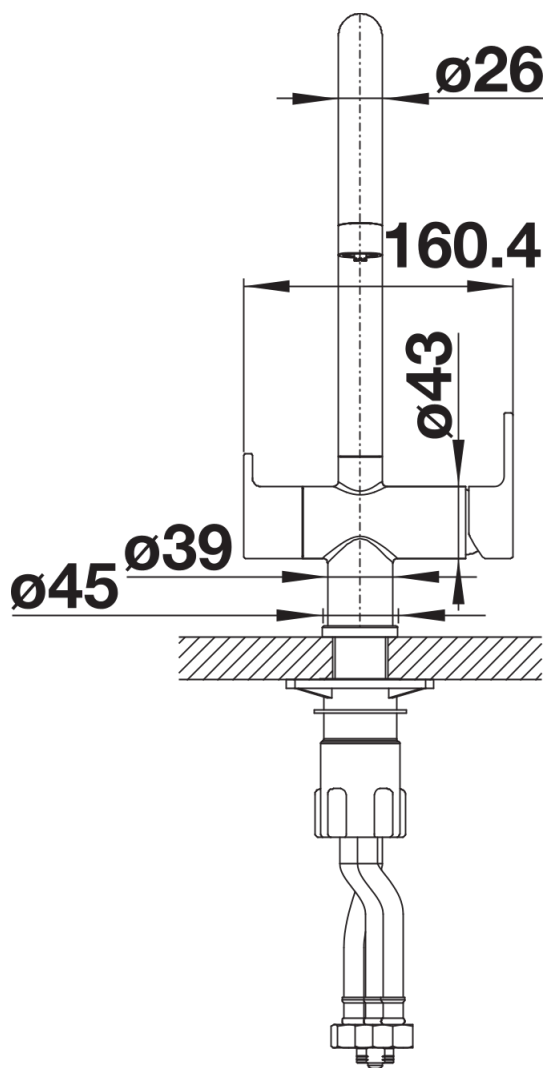
- Ø 35 mm tap hole required
  - Flexible connector pipes, 500 mm long and  $\frac{3}{8}$ " nut
  - High-quality filter system consisting of filter head and multi-stage filter cartridge
  - Flowmeter to display remaining filter capacity
  - Requires balanced high pressure supply only, minimum of 1.0 bar
  - Fit metal stabilising bracket if required, item number 513383
  - Replacement cartridge: Heavy metal filter / Reduces chemicals and chlorines / Filter requires changing up to every 1,800 litres dependent upon water hardness in your area
- Filter system sold separately.

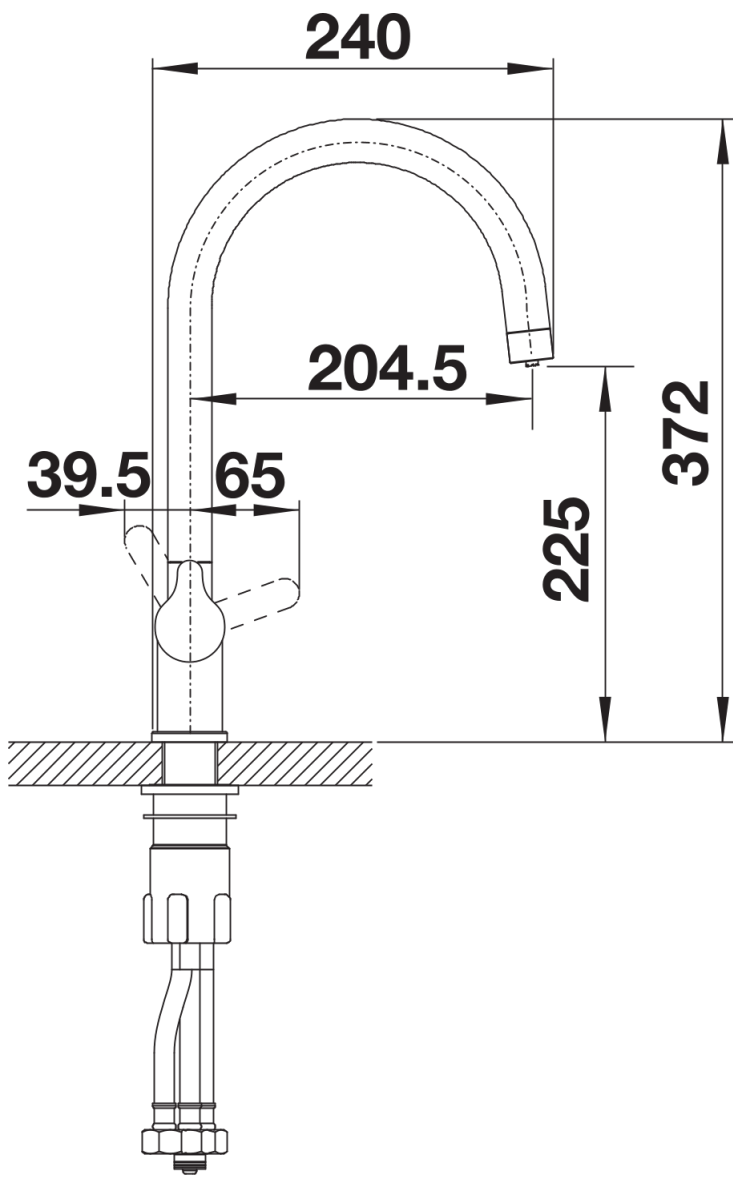
## Details

---



Swivel range





Side view