

Product information sheet TRIMA Filter

Item no. 526273

Benefits



- Comfortable 3 in 1 mixer tap with cold and warm water lever on the right, filtered water lever on the left
- Ergonomically shaped control elements with clear identification of functions
- Filtered and unfiltered water controlled separately
- Integrated spout for both water qualities with a special jet regulator
- Colour version for a perfect match with SILGRANIT sinks and bowls
- Needs to be installed with a water filter system

Colours



Available colours:

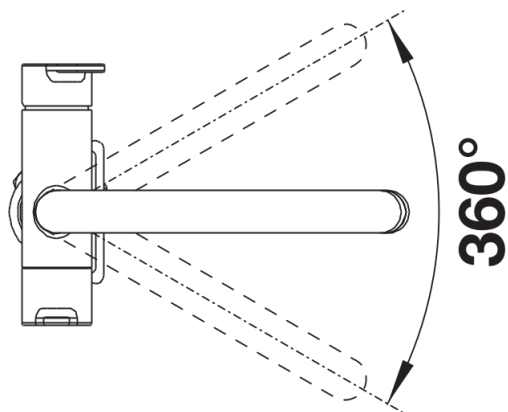
black
anthracite
rock grey
volcano grey
white
soft white
tartufo
coffee

SILGRANIT-Look black

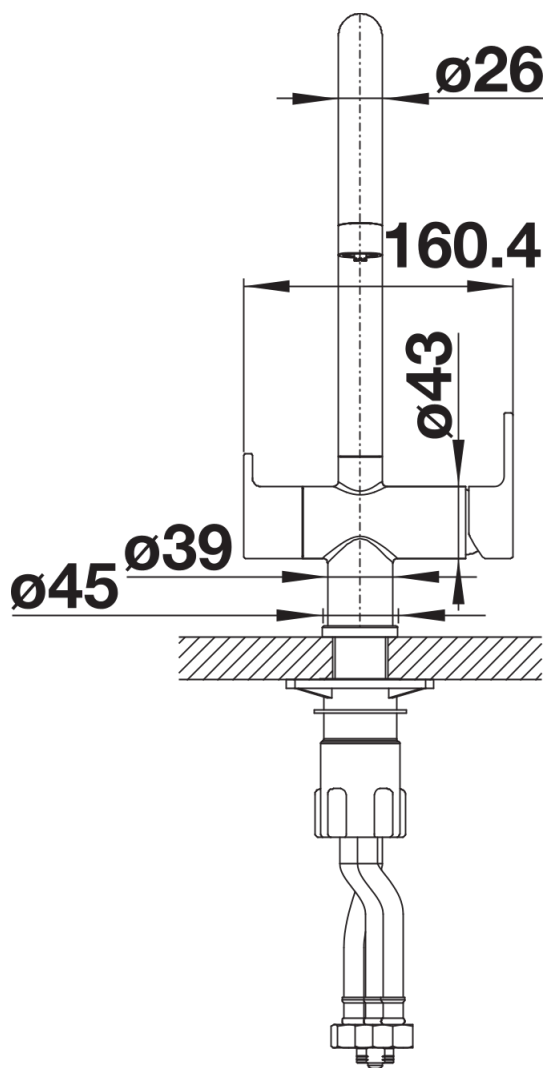
Scope of supply

- 360° swivel spout for greater reach
 - Ø 35 mm tap hole required
 - Valve and cartridge with ceramic seals
 - Flexible connection pipes with a length of 450 mm and $\frac{3}{8}$ " swivel nut for particularly easy and secure installation
 - Patented jet regulator for markedly reduced scaling
 - Stabilisation plate to increase the stability of the tap when fitting in stainless steel sinks
 - LGA approved
- Filter system not included.

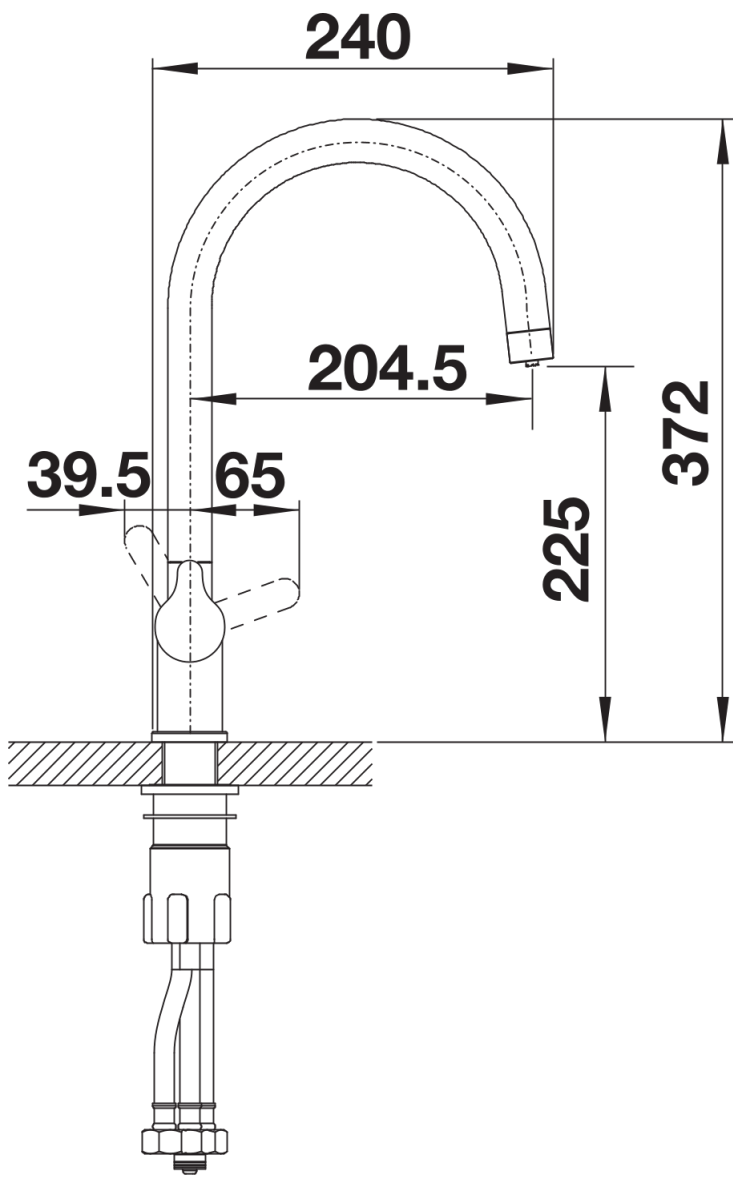
Details



Swivel range



Side view hand gear 2D



Side view