

## Product information sheet LINEE-S

Item no. 518438

### Benefits

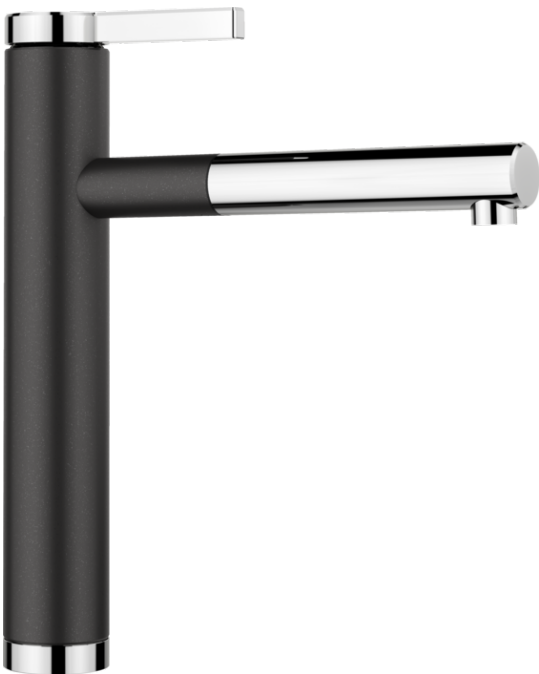
---



- Extendable spray in high-quality metal finish
- Silgranit-look colour version matching the Silgranit sinks and bowls

### Colours

---



Available colours:

black/chrome  
anthracite/chrome  
rock grey/chrome  
volcano grey/chrome  
white/chrome  
soft white/chrome  
tartufo/chrome

SILGRANIT Look dual finish anthracite/chrome

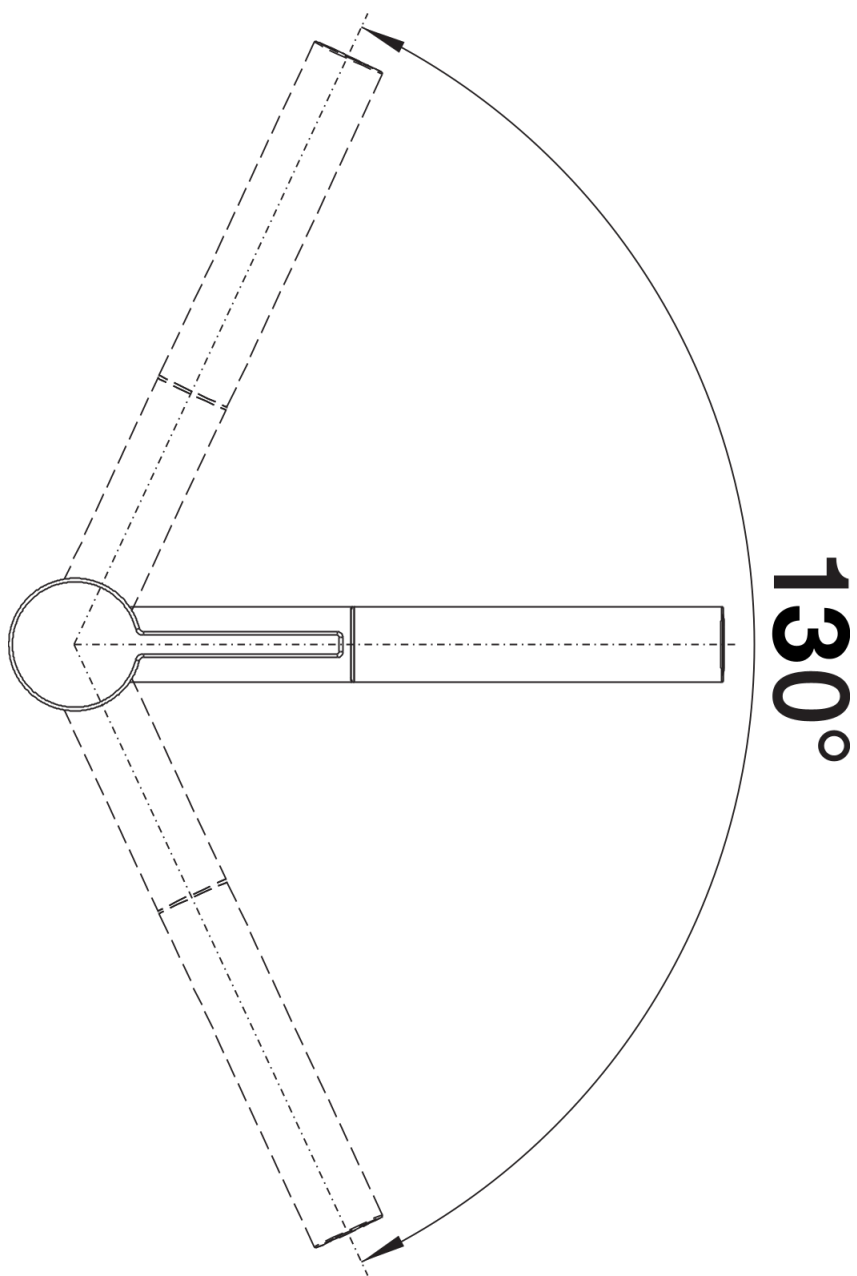
## Scope of supply

---

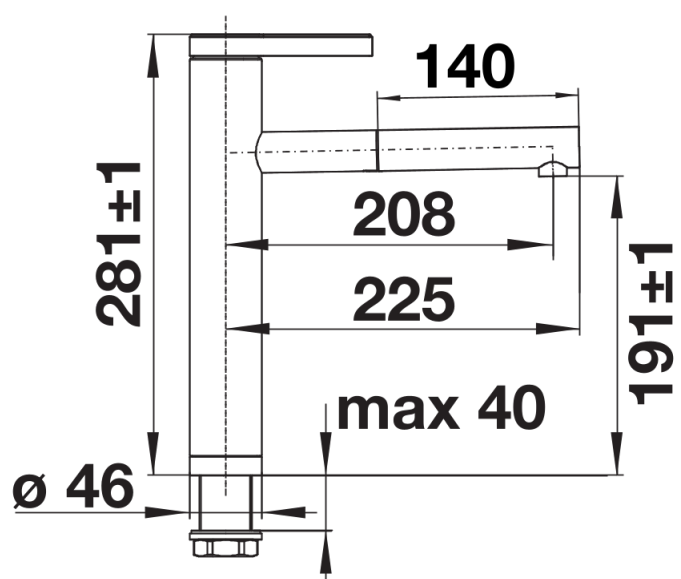
- 130° swivel spout for greater reach
- Ø 35 mm tap hole required
- With ceramic disk cartridge
- Patented jet regulator for markedly reduced scaling
- Spray made of metal
- Metal-sheathed spray hose
- Hose weight for reliable retraction
- Flexible connector pipes, 500 mm long and  $\frac{3}{8}$ " nut
- Stabilisation plate to increase the stability of the tap when fitted in stainless steel sinks
- With non-return valve and thus guaranteed against reflux in accordance with EN 1717

## Details

---



Swivel range



Side view