

Product information sheet TRIMA Filter

Item no. 520840

Benefits



- Comfortable 3 in 1 mixer tap with cold and warm water lever on the right, filtered water lever on the left
- Ergonomically shaped control elements with clear identification of functions
- Separate water circuit with extra spout for filtered water
- 360° swivel spout for greater reach
- Needs to be installed with a water filter system

Colours



Available colours:

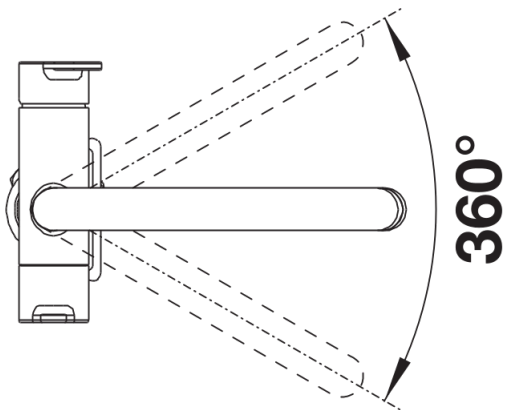
chrome

galvanic chrome

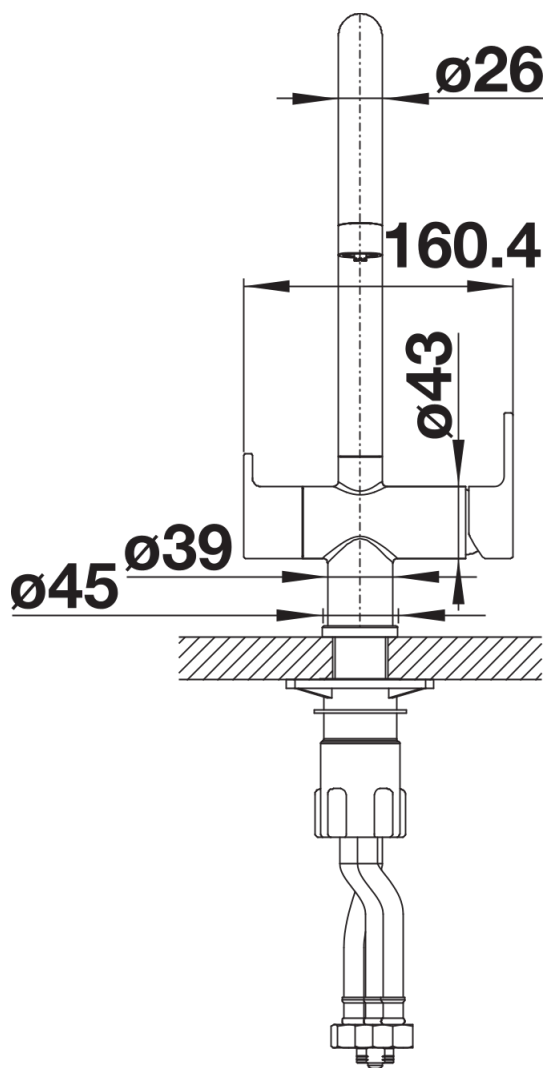
Scope of supply

- 360° swivel spout for greater reach
- Ø 35 mm tap hole required
- Ceramic valve and disk cartridge
- Patented jet regulator for markedly reduced scaling
- Flexible connector pipes, 500 mm long and $\frac{3}{8}$ " nut
- Stabilisation plate to increase the stability of the tap when fitted in stainless steel sinks
- Filter system not included

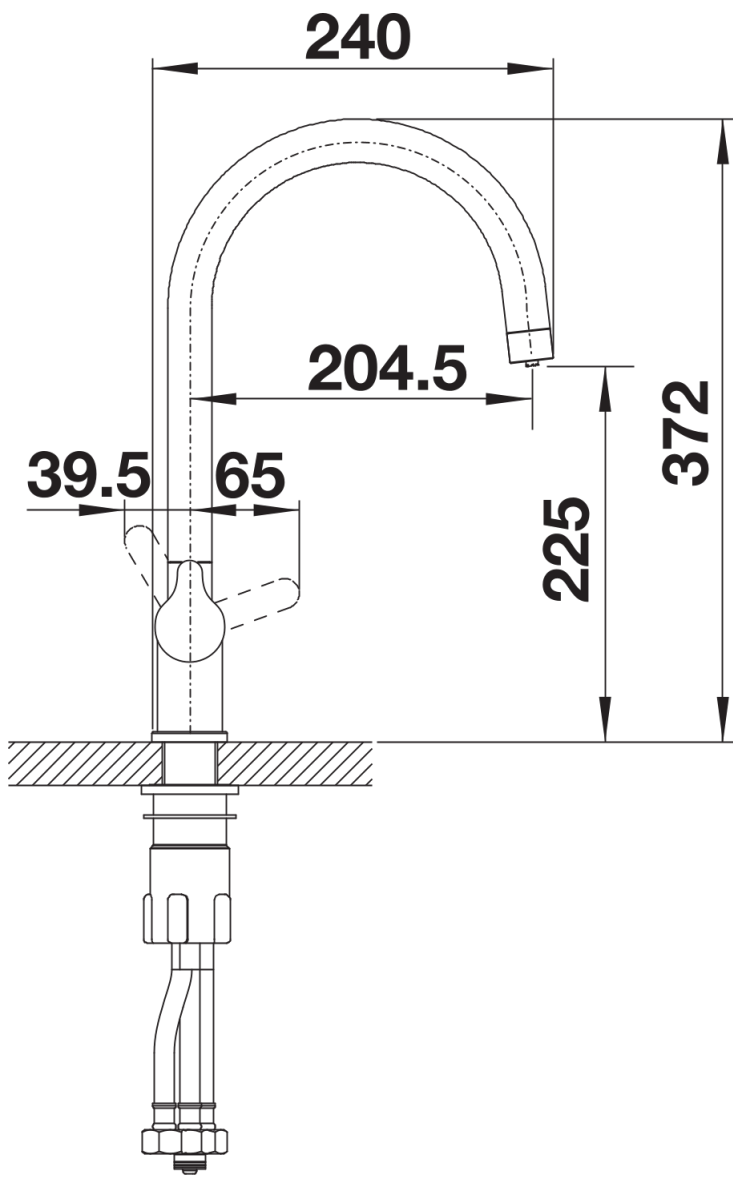
Details



Swivel range



Side view hand gear 2D



Side view